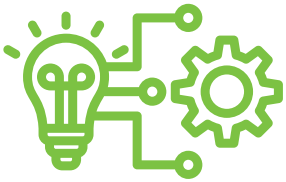


Superior Service. Unparalleled Results.

We are a Solutions-Oriented, Problem-Solving, Veteran-Driven Cybersecurity, Information Technology, and Information Assurance Company

Enterprise IT Management Capabilities



- **Systems Engineering** - Ensures seamless integration of various systems, adherence to government standards, scalability, extensibility, and optimized performance across the enterprise IT landscape.



- **Network Engineering & Management** - Ensures reliable connectivity, optimized performance, adherence to government security standards, scalability, and extensibility to support mission-critical client operations.



- **Cloud Computing** - Enhances operational efficiency, ensures robust security measures, and complies with government standards, providing a resilient and adaptable infrastructure for mission-critical applications.



- **Infrastructure Migration** - Ensures minimal disruption, enhanced performance, and strict adherence to government compliance standards, optimizing the client's IT infrastructure to address future challenges and achieve further innovations.



- **Analysis & Consulting** - Ensures tailored solutions that rapidly and effectively meet client mission-critical objectives. We focus on enhancing efficiency, security, and compliance with government regulations, supporting system sustainability and adaptability.